

Candidate for the
EDF Board of Directors

Rui Coimbra

President of Federation
Cerebral Palsy Portugal



The Voice for People with Cerebral
Palsy in the European Union
www.cp-eca.eu

Cerebral palsy (CP) is the most **common physical disability in childhood**. Symptoms vary among people and over time, but include **poor coordination, stiff/weak muscles, and tremors**. There may be problems with **sensation, vision, hearing and speaking**.

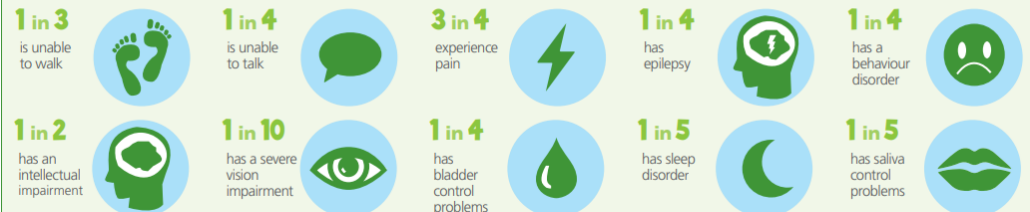
>90%
of children with CP
reach 50+ years old!

Source: Developmental Medicine &
Child Neurology (DMCN)


ASSOCIATED IMPAIRMENTS

Children with cerebral palsy may also have a range of physical and cognitive impairments.

Source: Cerebral Palsy Alliance



What do we want to achieve at European level?

- Accessible Vote for EU elections (see QR code) 
- Freedom of movement and full and active EU citizenship for all, including those needing to rely on personal assistants
- Complete implementation of the Accessibility Act, making all public transportation fully accessible to PwD
- Prevention of discrimination against people with disabilities
- Uniform legislation in areas of EU competence affecting PwD, such as tax harmonisation for assistive technologies
- Harmonisation of data collection on PwD by Eurostat
- Inclusion of workers with disabilities in the workplace
- Inclusion of children with disabilities in regular kindergartens and schools
- Support for families from the beginning, including personal assistance to children/youths/adults

Why vote for the CP-ECA candidate?

(1) Representativity of cerebral palsy

Cerebral palsy is the most common physical disability in childhood. It is estimated that there are about 2 cases for every 1000 live births: nearly 900,000 people in the European Union.

About 50% of these cases are severe or very severe (meaning they cannot walk unaided) and 90% of these cases reach adulthood with significant comorbidities.

For all these reasons, and to broaden the spectrum of the disabilities represented, it makes sense to have a candidate with cerebral palsy on the EDF Board.

(2) Rights and policies that cut across disabilities

Given the complex nature of cerebral palsy, CP-ECA advocates for the implementation of transversal policies affecting different types of disability and with a European scope.

Persons with a disability should have the same rights throughout the European area.

(3) Self-representation of persons with disabilities

As a person with cerebral palsy, Rui's experience fighting for the rights of people with disabilities and his professional experience during a 20-year career in large multinationals (Vodafone, IBM) give him a rich CV of total inclusion and participation in society.

Rui's background will undoubtedly bring value to the EDF Board.

Connect with Rui:



Download this
document as a PDF:

